

LIGHTING KEY

- ETC 14 DEGREE
- ETC 26 DEGREE
- ETC 36 DEGREE
- ETC 50 DEGREE
- ETC MFL PAR
- MFL PAR 64
- WFL PAR 64
- 3 CELL SKY CYC
- MR-16 STRIP 3 CIRCUIT
- VAR-LITE 1000 TSD
- ALTMAN COMET SPOTLIGHT
- PROJECTOR DOWSER
- MARTIN RUSH STROBE CWL
- PRACTICAL
- PAR STROBE CANNON
- APOLLO SCROLLER
- TOP HAT
- SEACHANGER
- RADIANCE HAZER

LIGHTING LEGEND

- COLOR
- DMX
- CHANNEL

NOTES:
PLEASE HAVE ALL LIGHTS HUNG, CIRCUITED, COLORED, PATCHED AND WORKING PRIOR TO LIGHT FOCUS.

PAY CLOSE ATTENTION TO LENS/LAMP SELECTION FOR PARS.

ELECTRICS TRIM HEIGHTS ARE ON LINESSET SCHEDULE.

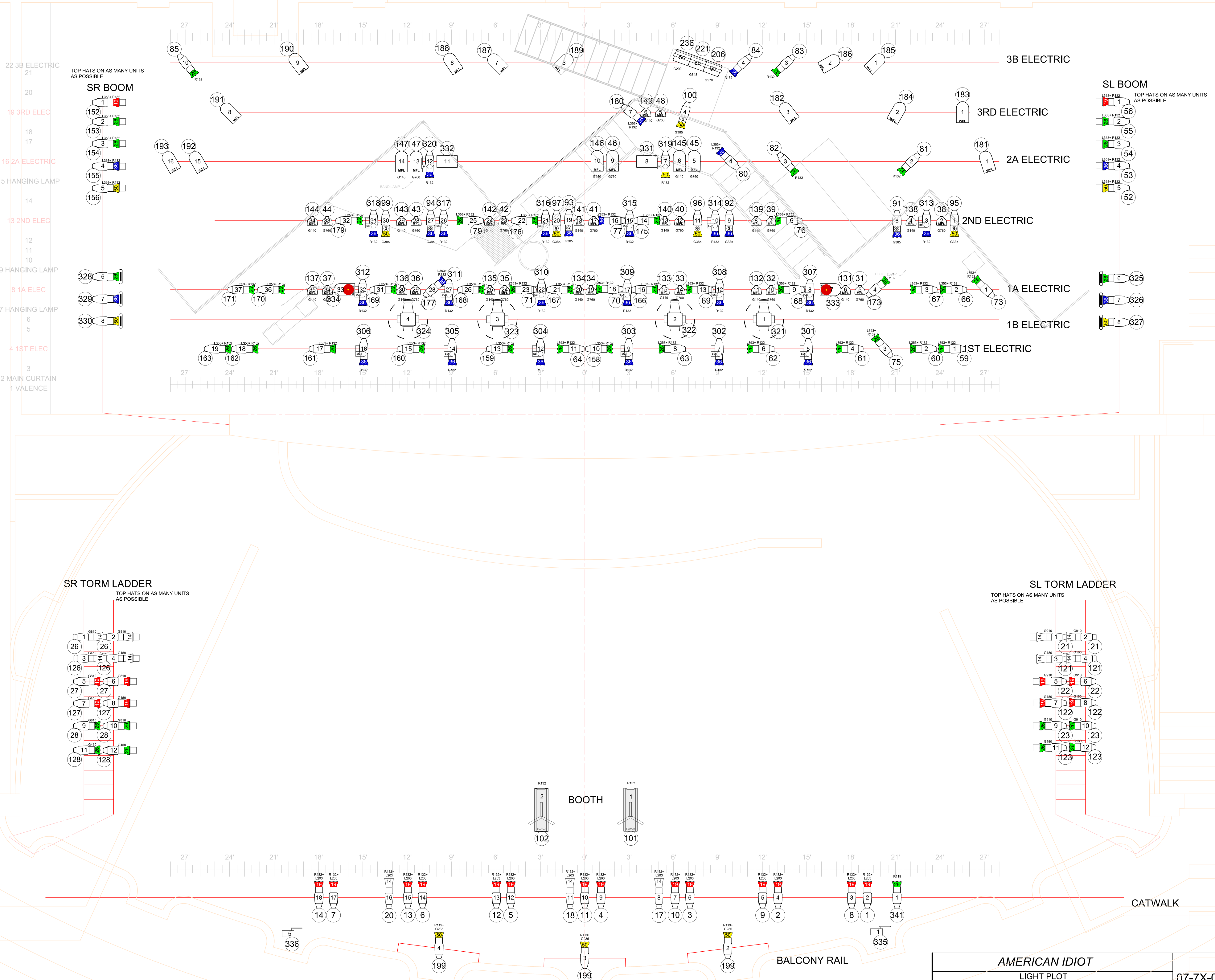
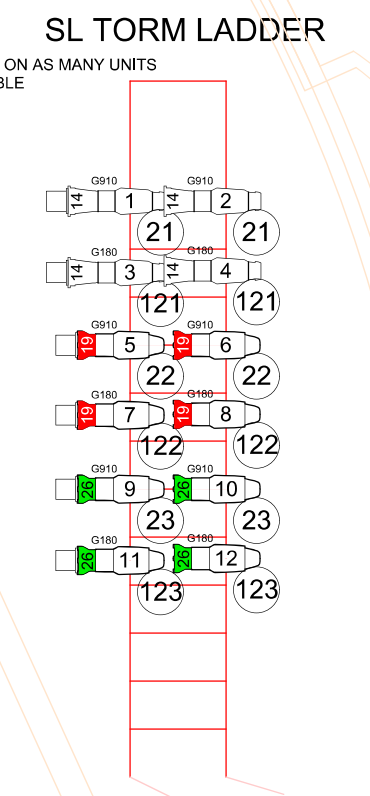
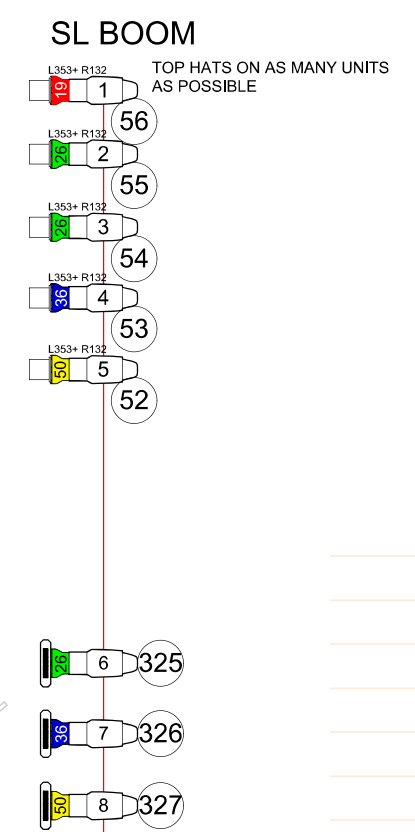
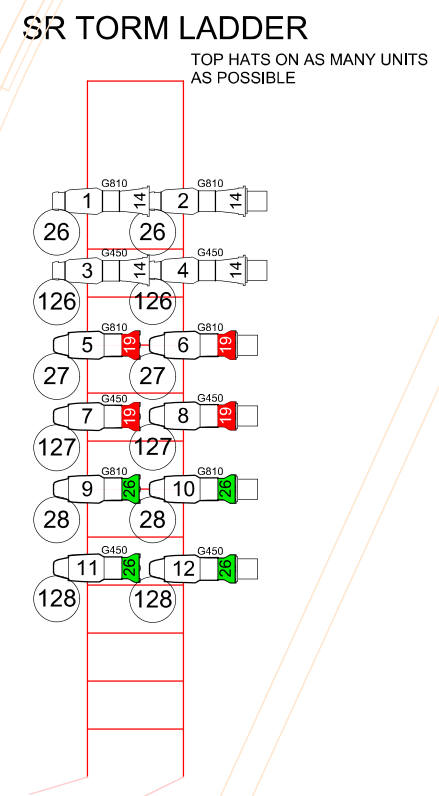
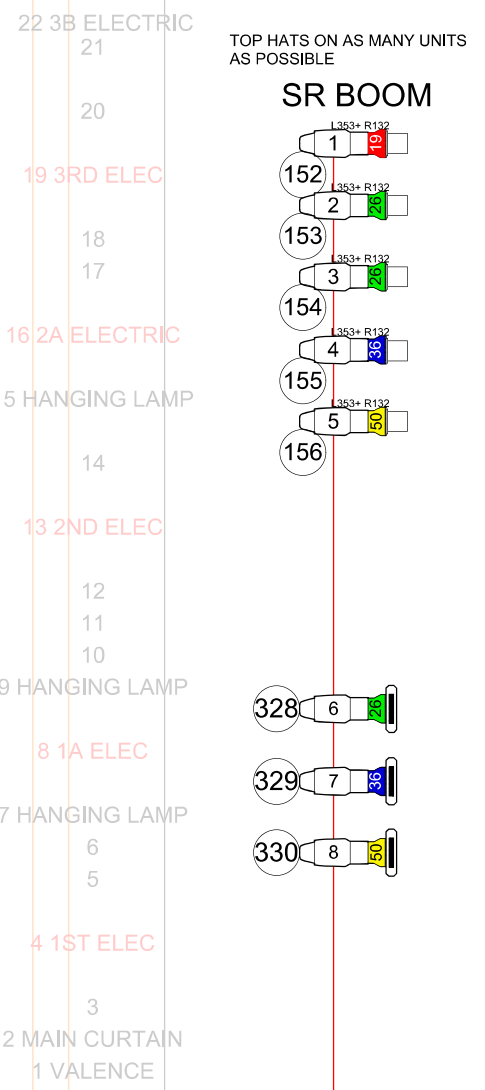
I ADVISE TO HANG/WIRE PRACTICAL FIXTURES OVER STAGE BEFORE SET GOES IN.

PLEASE TOP HAT ALL FIXTURES ON TORMS AND BOOMS. ORDER MORE IF BUDGET ALLOWS.

1B AND 3B ELECTRICS ARE ADDITIONAL ELECTRICS THAT WILL NEED POWER/DIMMERS/DMX.

DECK PLOT FIXTURES ALL FACE BACKS OF WALLS

LED FIXTURES ON WALL ARE ON TV WALL DRAWING



AMERICAN IDIOT		07-7X-01
LIGHT PLOT		
DESIGNER: DEREK EASTON	DRAFT: DEREK EASTON	
DIRECTOR: LESLIE CHARIPAR	SCALE: 1/4" = 1'-0"	